

INVASI



HELLO



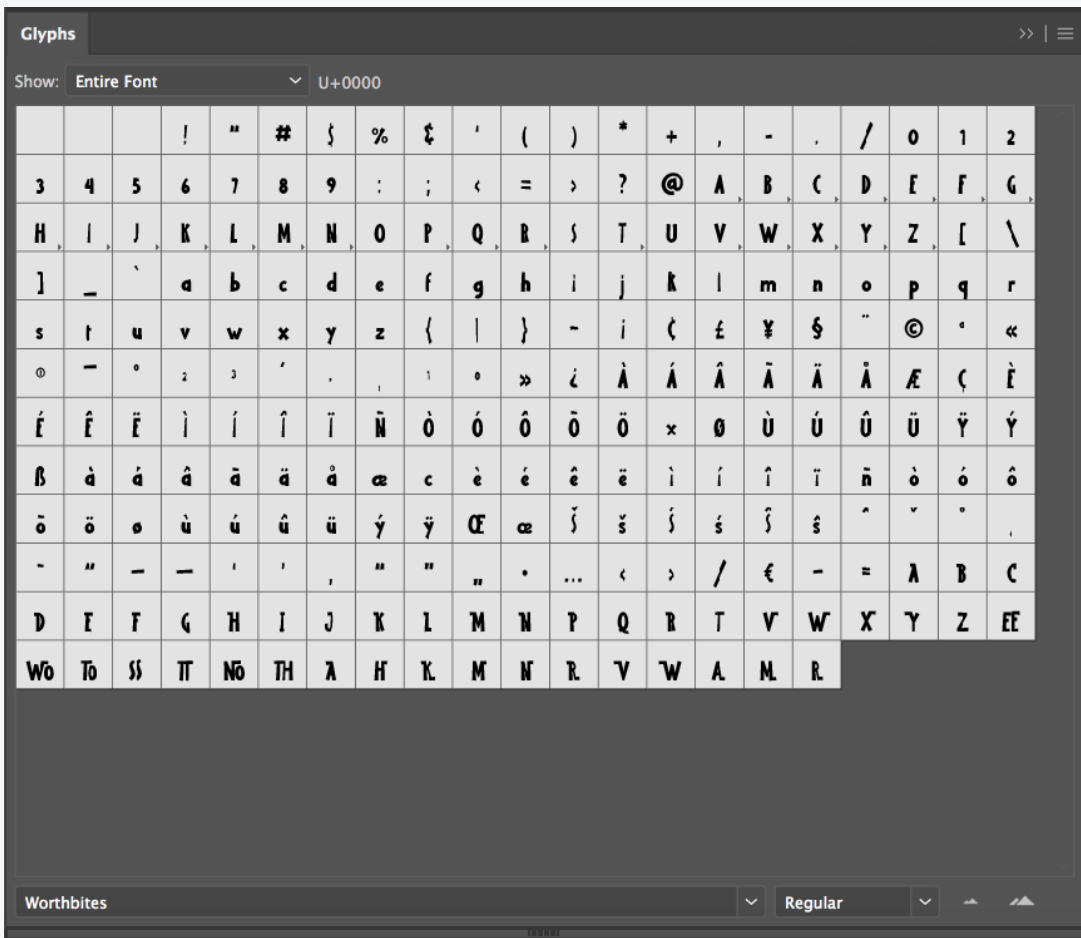
HE

LLO

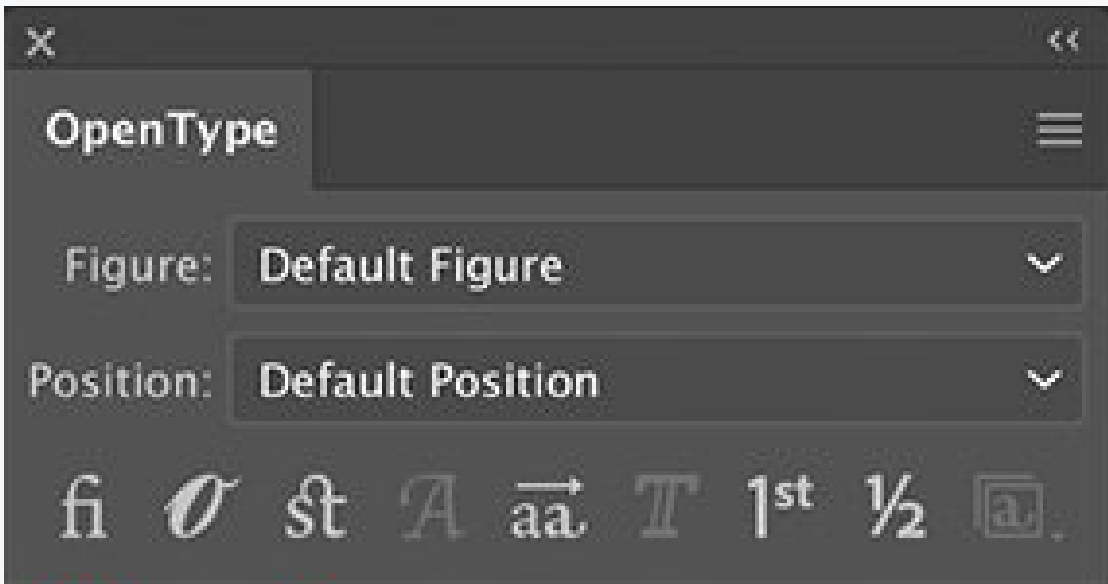
This is a little instruction that can help you access all extra glyphs (ligatures, alternatives etc) in my fonts.

HOW TO USE ALL GLYPHS IN ILLUSTRATOR:

- 1. Open Adobe Illustrator and create a new document. Head over to **Window > Type > Glyphs** to open the Glyphs panel.



- 2. To activate or deactivate ligatures, alternate, swash open the **OpenType** panel by going to **Window > Type > OpenType**.



01 02 03 04 05

- 01. Button activates Standard Ligatures.
- 02. Button activates Contextual Alternates.
- 03. Button activates Discretionary Ligatures.
- 04. Button activates Swash.
- 05. Button activates Stylistic Alternates.

# INVASI

—————→

HELLO—————→

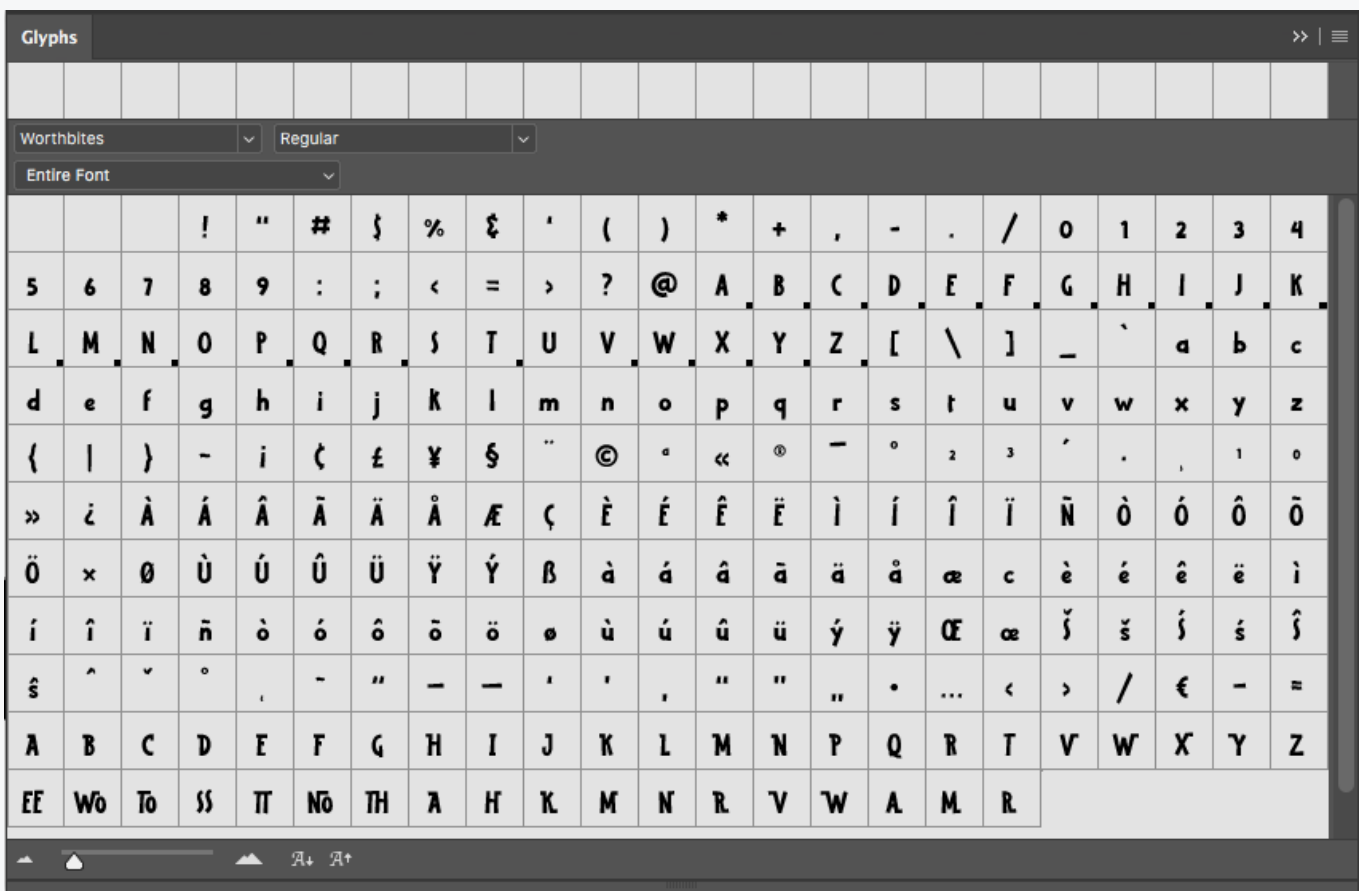
————HE————

—————LLO

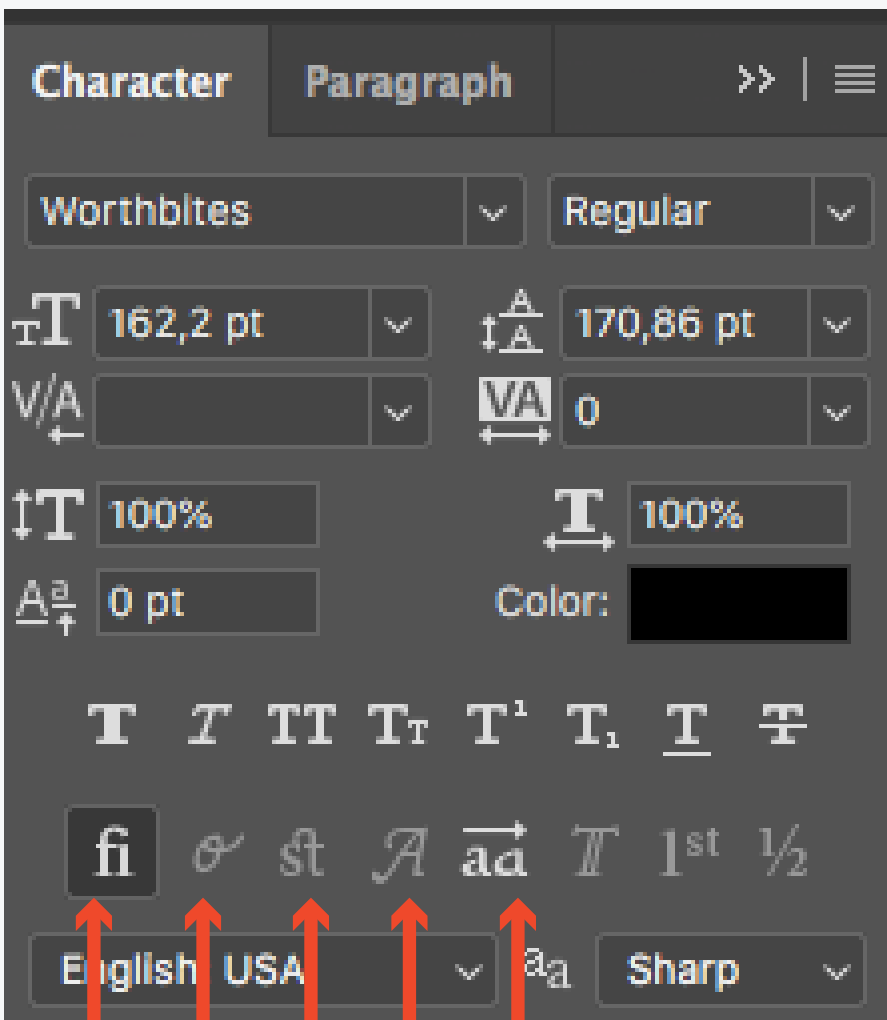
This is a little instruction that can help you access all extra glyphs (ligatures, alternatives etc) in my fonts.

## HOW TO USE ALL GLYPHS IN PHOTOSHOP:

1. Open Adobe Photoshop and create a new document. Head over to **Window > Glyphs** to open the Glyphs panel.



2. To activate or deactivate ligatures, alternate, swash open the **OpenType panel** by going to **Window > Character**.



01 02 03 04 05

01. Button activates Standard Ligatures.
02. Button activates Contextual Alternates.
03. Button activates Discretionary Ligatures.
04. Button activates Swash.
05. Button activates Stylistic Alternates.

# INVASI

—————→

HELLO—————→

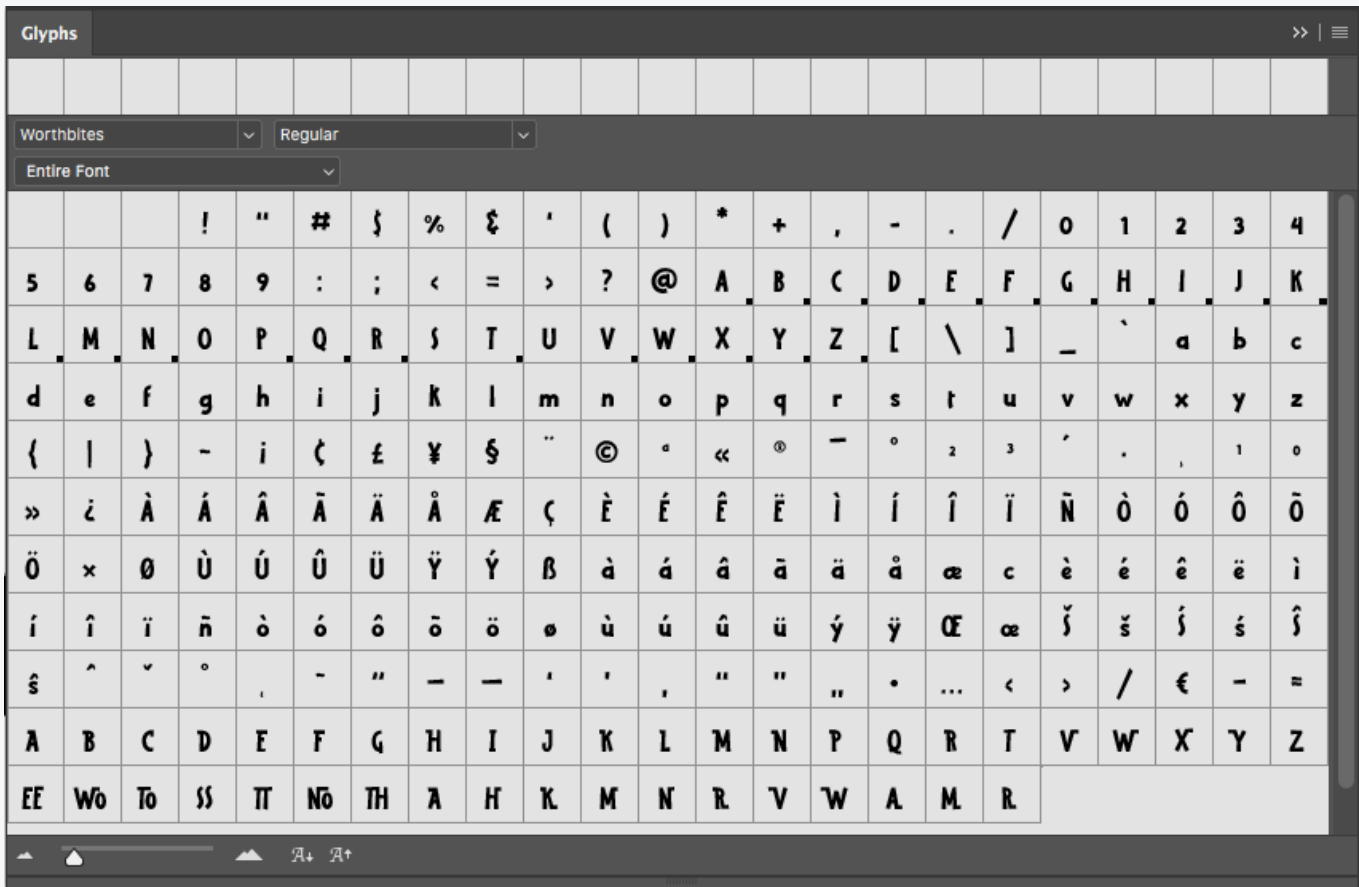
————HE————

—————LLO

This is a little instruction that can help you access all extra glyphs (ligatures, alternatives etc) in my fonts.

## HOW TO USE ALL GLYPHS IN INDESIGN:

1. Open Adobe InDesign and create a new document. Head over to **Window > Type > Glyphs** to open the Glyphs panel.



2. To activate or deactivate ligatures, alternate, swash open the **OpenType panel** by going to **Window > Type > Character**.

